



290 Hiawatha Drive, Waterloo

\$619,000

Presented by Bess Assimacopoulos-Markou



Bess Assimacopoulos-Markou

Sales Representative
Gregorios Realty Inc., Brokerage
519-588-1834 (direct) 519-886-3164 (office)
markou123@rogers.com
www.bessliving.com



Not intended to solicit sellers or buyers under contract with another Realtor.

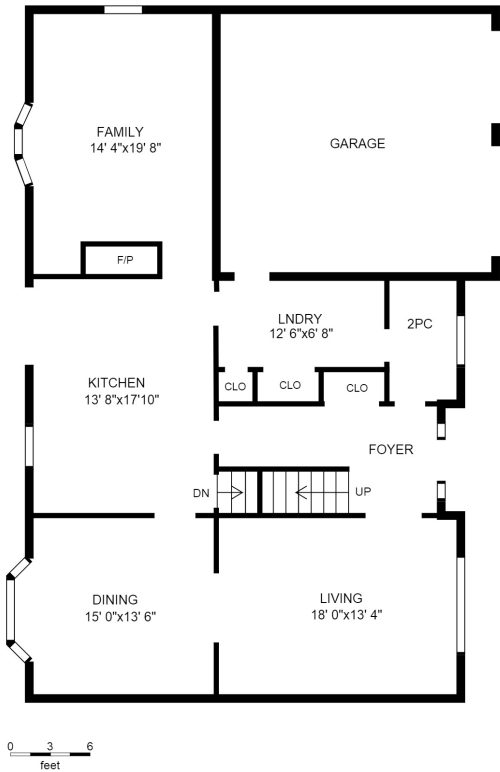




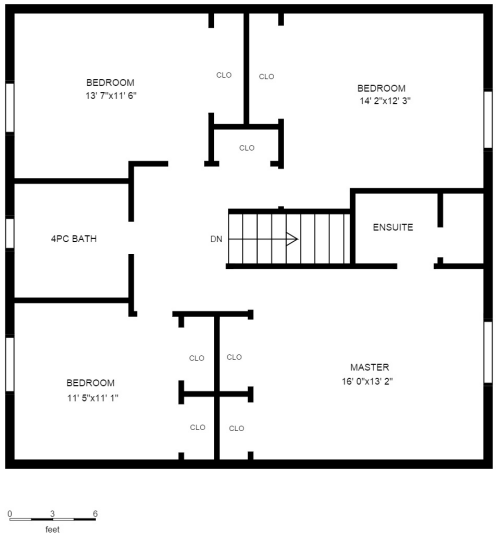
Prestigious Old Beechwood embraced by Clair Creek, Pool and Tennis Club , lovely 4 bedroom home, backing onto creel, spectacular private lot. Updated maple kitchen, appliances included, Jen-Air gas stove and BBQ. Main floor family room with pine built-in and gas fireplace, finished lower level with fireplace and bath. Lovely deck, formal living room and dining room, gas line to BBQ, storage conveniently located to Universities and schools! 60 foot frontage!

Features: Community Pool, Wood Fireplace, Auto-Garage Door/Remotes, Inside Entry (from Garage), Backs on Greenbelt, Main Floor Laundry, Separate Dining Room, Rec Room, Family Room, Bathroom-Main Floor 2 Piece, Master Bedroom Ensuite, Central Air, Dishwasher, Refrigerator, Stove, Washer, Dryer, Water Softener, Alarm System, TV Cable, Hi-Speed Internet

Property Taxes: \$6,591 (2014) Lot Size: 60' x 171.32' x 90.80' x 157.78' Possession: Negotiable



MAIN FLOOR



2ND FLOOR

All measurements and layout should be considered approximate.

