

## 333 Milla Court, Waterloo

Price \$1,100,000 Sq.Ft. 2,044 Taxes \$7,383/17



### Bess Assimacopoulos-Markou

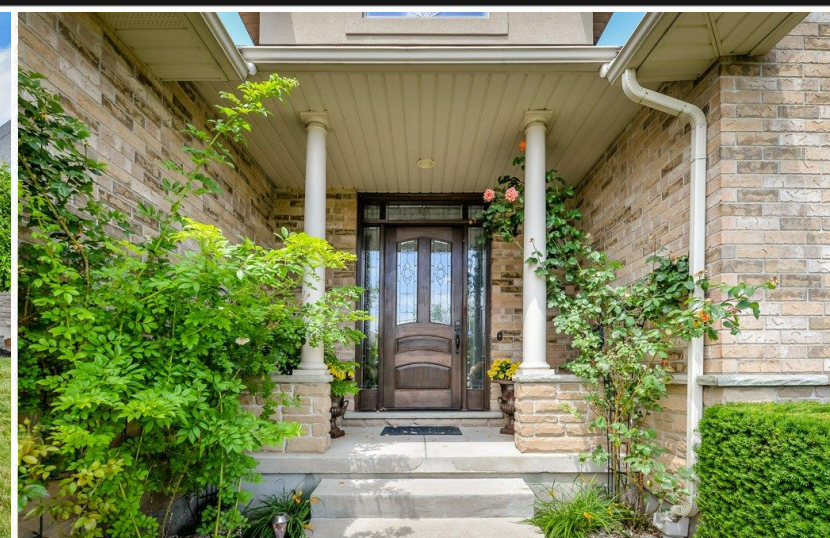
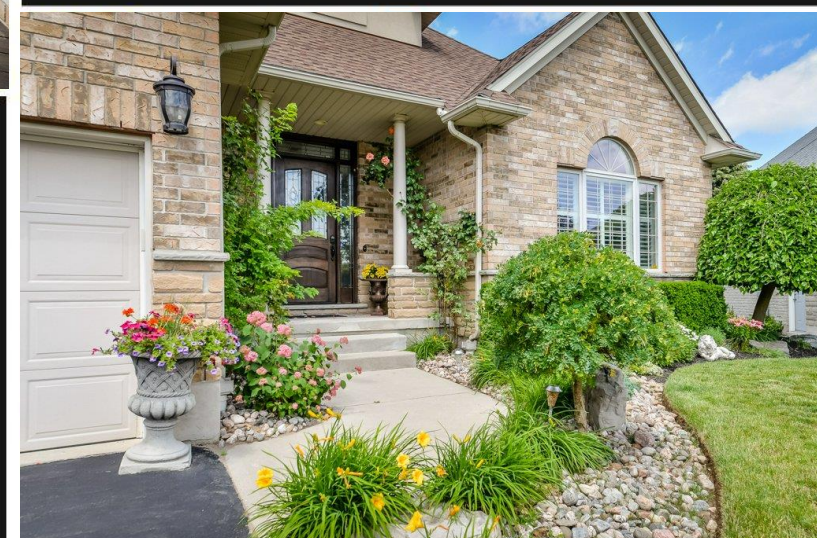
Sales Representative

RE/MAX Twin City Realty Inc. Brokerage

(Office) 519-885-0200 (Direct) 519-588-1834

[markou123@rogers.com](mailto:markou123@rogers.com) [www.bessliving.com](http://www.bessliving.com)

Not intended to solicit sellers or buyers under contract with another Realtor.



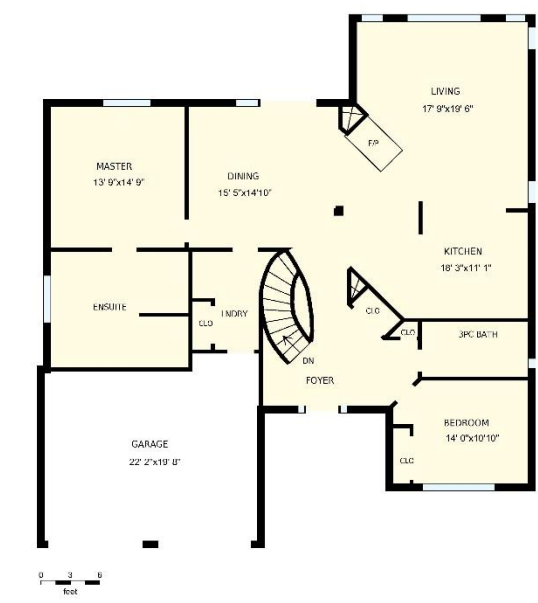


Exceptional custom home, built by Milla! All brick construction with an accent of stucco. Inviting entry, open floor plan. Attention to detail. Circular staircase to finished lower level. Lovely floor plan features a main floor Master suite with luxurious en suite, built-in custom cabinetry, beautiful glass shower door that moves on a slider, glass wall separates walk in closet. Whirlpool tub Spacious gourmet kitchen, stainless steel appliances included. Granite counters. Circular island with stools, open to Great room. Double sided fireplace, is open to formal Dining room and Great room. Additional bedroom or office located at the front of the home, adjacent to spacious 3pc bath with glass shower. An abundance of windows allowing sunlight! Window coverings throughout are included. California shutters and window drapes were custom designed. Newer hickory scraped floors were installed, 10 foot solid doors, 10 foot tray ceiling in Master, 9 foot tray ceiling in Master bedroom, vaulted Great room ceiling, lower level, walk out is carpeted and tiled. The features consist of a full bar, gas fireplace, pot lighting. 2 additional bedrooms with ensuite and walk in closet. Back yard oasis! Spectacular landscaping, in ground pool with rock water fall, cabana bar and stools, great for entertaining family and friends. Extensive use of rock and out door walk ways, newer deck, fenced and ample privacy located on one of Waterloo's nicest courts, facing a lovely park.



### 333 Milla Ct, Waterloo, ON

Total Exterior Area Above Grade 1924 sq. ft.



**Main Floor**  
Exterior Area 1924 sq. ft.



**Basement**  
Exterior Area 1845 sq. ft.

All room dimensions and floor areas must be considered approximate and are subject to independent verification. For method of measurement please see <https://yourguide.com/measure/>.

PREPARED FOR: Bess Assimacopoulos-Markou  
Sales Representative  
RE/MAX Twin City Realty Inc. Brokerage