



546 Beaver Creek Crescent, Waterloo

\$399,900

Presented by Bess Assimacopoulos-Markou

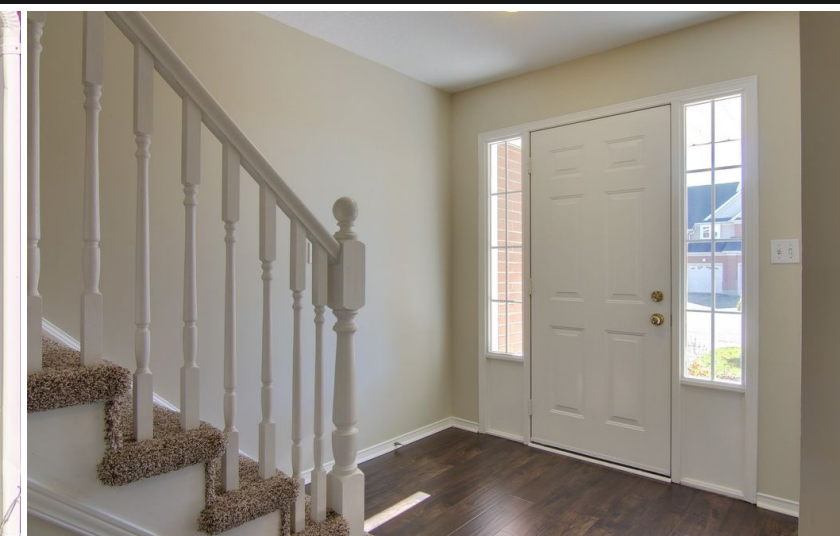


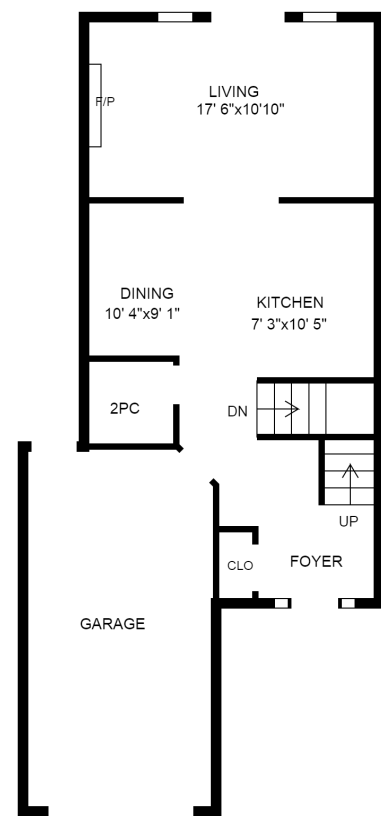
Bess Assimacopoulos-Markou

Sales Representative
 Gregorios Realty Inc., Brokerage
 519-588-1834 (direct) 519-886-3164 (office)
 markou123@rogers.com
 www.bessliving.com

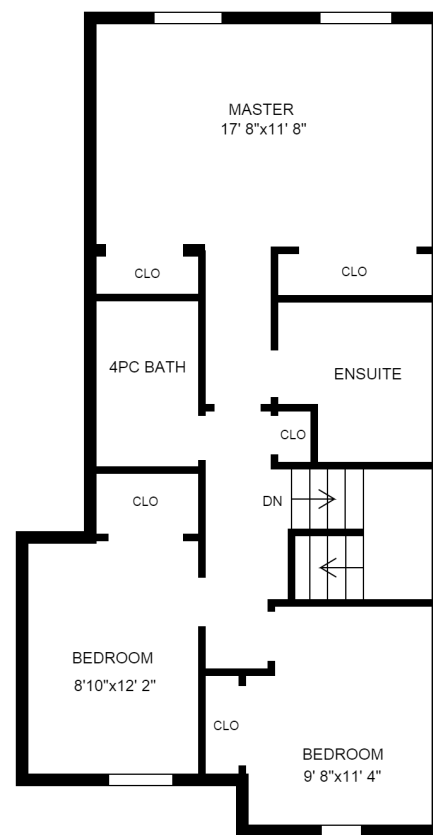


Not intended to solicit sellers or buyers under contract with another Realtor.





0 3 6
feet



0 3 6
feet

All measurements and layout should be considered approximate.



Lovely Townhome, no condo fees, backing onto conservation area. New laminate floors, broadloom and painted throughout. Sunken great room with gas fireplace, open to kitchen and dinette area. Powder room, man door entry from the garage. Sliders from the great room to deck. Spacious lower level with additional 2 piece bathroom, three bedrooms, spacious master bedroom with ensuite! Roof to be replaced by Seller.

FEATURES: Gas fireplace, deck, walk-out basement, inside entry (from garage), recreation room, main floor powder room, master bedroom ensuite, central air, central vacuum rough-in, dishwasher, refrigerator, stove, washer, dryer water softener, cable.

LOT SIZE: 21.44' x 120'
PROPERTY TAXES: \$3,561 (2014)

