



684 Beechwood Drive, Waterloo

\$455,000

Presented by Bess Assimacopoulos-Markou



Bess Assimacopoulos-Markou

Sales Representative

Gregorios Realty Inc., Brokerage

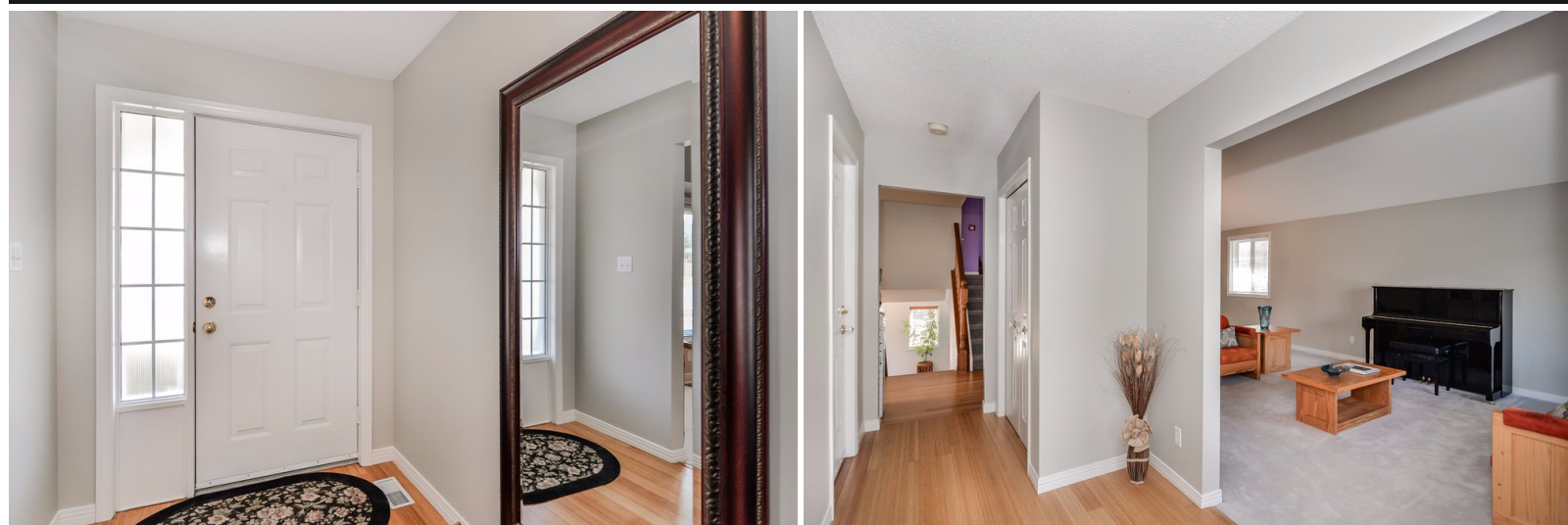
519-588-1834 (direct) 519-886-3164 (office)

markou123@rogers.com

www.bessliving.com

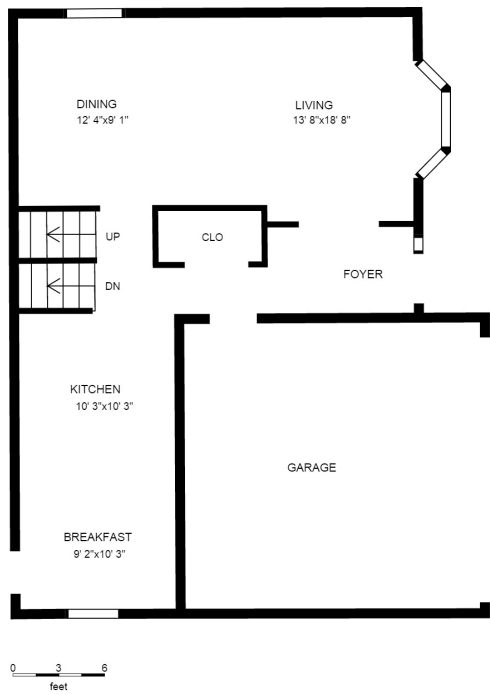


Not intended to solicit sellers or buyers under contract with another Realtor.

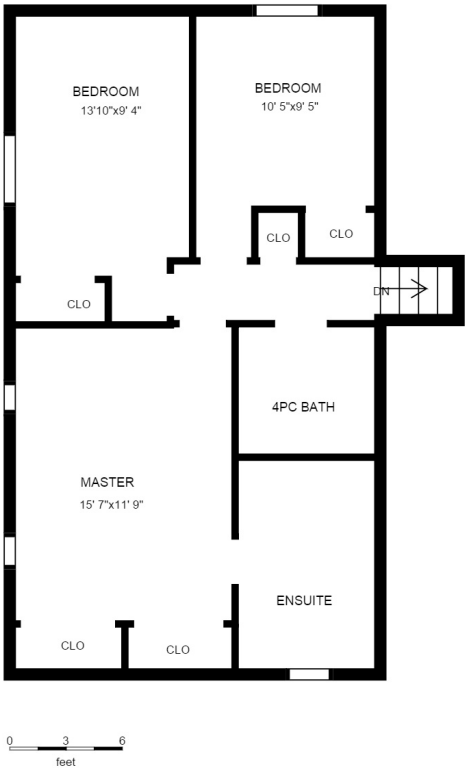




Beautiful spacious four level, finished backsplit. 4 Bedrooms. Walkout from lovely family room with fireplace, open to large kitchen and walkout from dinette. Vaulted living room & dining room. Bamboo, laminate, broadloom, & tiled floors. Island Kitchen. Appliances included. 4th bdrm/office/den, laundry & bath. Finished 4th level fitness room. Blinds, central air, garage opener, built-in bar, fruit cellar, oak railings, whirlpool tub ensuite, deck. Updated roof, most windows, softener. 2,361 sq ft over 3 floors.
Features: Whirlpool, Gas Fireplace, Deck(s), Walk-Out Basement, Auto-Garage Door/Remotes, Inside Entry (from Garage), Separate Dining Room, Den/Office, Rec Room, Master Bedroom Ensuite, Central Air, Central Vac Rough-In, Dishwasher, Refrigerator, Stove, Microwave, Washer, Dryer, Water Softener, Cold Room/Cellar, TV Cable, Hi-Speed Internet, Exercise Room
Property Taxes: \$4,144 (2014) Lot Size: 52.490 x 109.84 feet Possession: June 30th or later



MAIN FLOOR



2ND FLOOR

All measurements and layout should be considered approximate.

